

**WITH THE  
POWER OF  
POLYMER!**  
**GIVE YOUR WALLS THE  
WATERPROOF COVER**



**All Weather-proof**



**Smoother finish**



**Crack-proof**



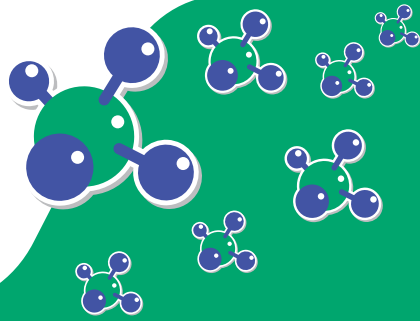
**More Durable**

Zero M Polyrich Wall Putty comes with the Polymer advantage which protects from water damage, cracks and dampness and makes your walls super smooth and durable.

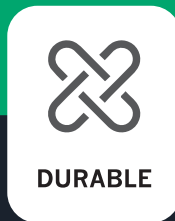
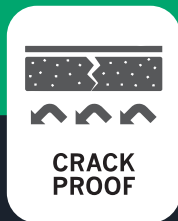
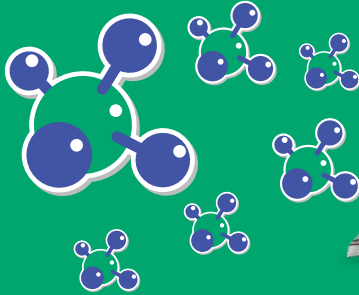


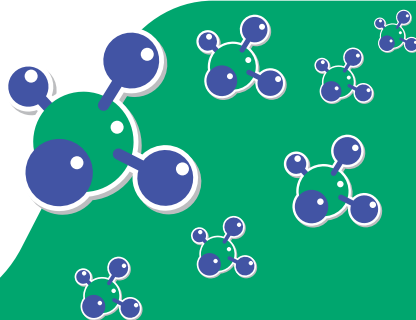
For information on home building & placing orders,  
visit [www.nuvocohomeassist.com](http://www.nuvocohomeassist.com) or scan this QR code

# WATERPROOF WALL FINISH



Introducing Zero M Polyrich Wall Putty from Nuvoco which provides a smooth finish on the surfaces of walls, prevents cracks, flakes, peels, and dampness – on both interior and exterior walls – that occurs due to changes in the weather, Polyrich Wall Putty provides extensive, superior coverage and saves the walls. Its high water repelling characteristic prevent dampness and the resulting discolored patches, year after year.





## **EASY PASTE. EASY PREPARATION.**

Take a small and manageable quantity (consumption for 1.5 to 2 hours) of POLYRICH wall putty in a pan.

Add 35-40% water gradually and mix thoroughly for 5-10 minutes, till the paste is smooth and lump free.

## **SURFACE PREPARATION FOR EASY APPLICATION**

### **NEW SURFACE**

All dirt, dust, loose foreign materials shall be removed and cleaned thoroughly. In case of cracks, fissures, voids, protrusion, depression etc to be repaired before applying

### **OLD UNPAINTED & PAINTED SURFACE**

All old paints, dirt, dust, shall be removed and cleaned thoroughly with steel wire brush or steel plates that the base plaster gets almost exposed. In case of cracks, fissures, voids, depression etc to be repaired before applying.

### **EXTREMELY ROUGH SURFACE**

Such surfaces shall be smoothed with a thin white cement mortar, prior to the putty work, and shall be cured for a couple of days. At the time of the application of putty, the surface should be in saturated surface dry condition.

### **AREA AFFECTED BY EFFLORESCENCE/SALTPETER ACTION**

Such surfaces shall be thoroughly scrapped with wire brush or emery paper or sandpaper to be treated with mild

citric acid prior to the putty work. After half an hour of the application, the area shall be washed with clean water to ensure the complete removal of the acid. At the time of the application of putty, the surface should be in saturated dry state.

## **SIMPLE STEPS FOR EASY APPLICATION**

Ensure that the desired surface is properly prepared

Consult your site engineer for suitability of application on any non-cement surfaces like steel, timber etc.

Ensure that the surface is in saturated surface dry condition. Application on any Too wet surface in not advisable.

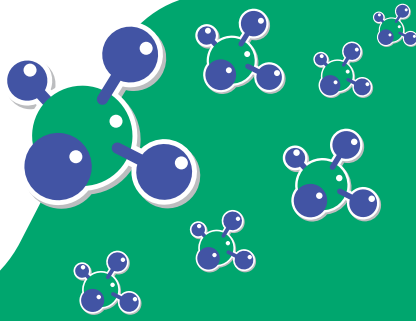
Apply the first coat with a thin steel plate (commonly termed as 'Fiber' by the applicators) vertically from bottom to top and ensure a thin layer.

Before applying of the 2nd coat, allow the first coat to dry for at least 6 to 12 hours, depending upon the weather condition. The 2nd coat shall be applied in horizontal directions.

Remix the prepared mix stirring it for 1-2 minutes, if the same is kept idle for more than half an hour or so.

If the paste gets hardened, it shall be discarded, not to be used by adding and remixing with water.

Allow the surface to dry up completely. Then rubbing with fine emery or sand paper remove all application marks, if any.



### ALL ABOUT AFTER CARE

Conventional curing is not required. Depending up on weather conditions, intermittent mild water spraying recommended.

### BEST STORAGE METHOD

Store in a dry place. An elevated platform, 6" above floor is best advised.

### PERFORMANCE COMPARISON CHART

POINT OF COMPARISON	POLYRICH WALL PUTTY	ACCLAIMED CONVENTIONAL PUTTIES	POP
Area of application	Universal, both for interior and exteriors	Not very suitable for external exposed surfaces.	Cannot be applied on exterior exposed surface.
Binding properties	Polymer rich cement based, hence higher bonding property.	Lower binding properties due to presence of chalk powder	Low bonding capacity
Coverage	Around 14-15 sft/kg, depending upon the condition of the surface	Around 12-14 sft/kg, depending upon the condition of the surface.	Around 7-8 sft/kg, depending upon the condition of the surface.
Consumption of paint	At least 10-15% less consumption	At least 8-10% less consumption	Requires higher quantity.
Cost	Higher economy	Moderate economy	Lower economy
Durability	Depends upon surface preparation and applicatio	Depends upon surface preparation and application	Definitely lower the putty. Easily affected by water/ moisture.
Strength	Comparable to cement lamina	Better than POP	Cannot be campared.
Water resistance.	High	Moderate	Not at all, gets deteriorated.